

Cynthia H. Moon, MD
Christopher Doty, MD

From the Department of Emergency Medicine, State University of New York, Downstate Medical Center, Brooklyn, NY.

0196-0644/\$-see front matter

Copyright © 2006 by the American College of Emergency Physicians.

doi:10.1016/j.annemergmed.2006.01.035

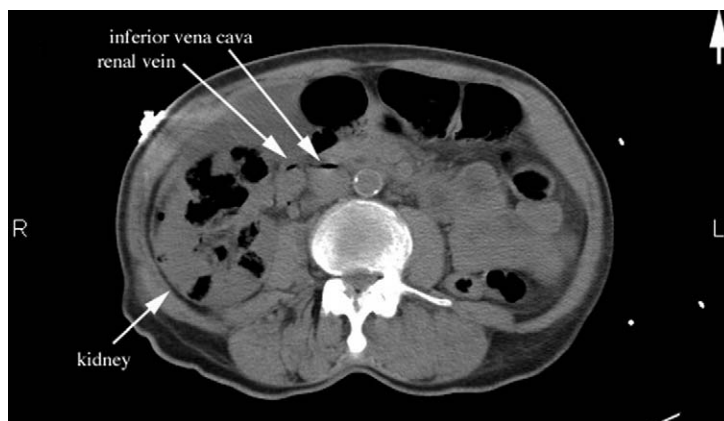


Figure 1. The computed tomography reveals extensive gas accumulation in the parenchyma and perinephric structures of the right kidney, including the renal vein and inferior vena cava.



Figure 2. A near-complete destruction of the right kidney is observed in a more caudal section. Used with permission of Cynthia H. Moon, MD, SUNY Downstate Medical Center, Brooklyn, NY.

[Ann Emerg Med. 2006;48:354.]

An 87-year-old woman presented because of decreasing mental status and anorexia over 4 days. She had a history of diabetes mellitus and dementia. Her examination results were remarkable for tachycardia and diffuse abdominal tenderness. She was anuric on the placement of Foley catheter, and her serum creatinine level was elevated. An abdominal computed tomography without contrast enhancement (Figure 1 and 2) was obtained.

For the diagnosis and teaching points, see page 357.

To view the entire collection of Images in Emergency Medicine, visit www.annemergmed.com