

Erratum

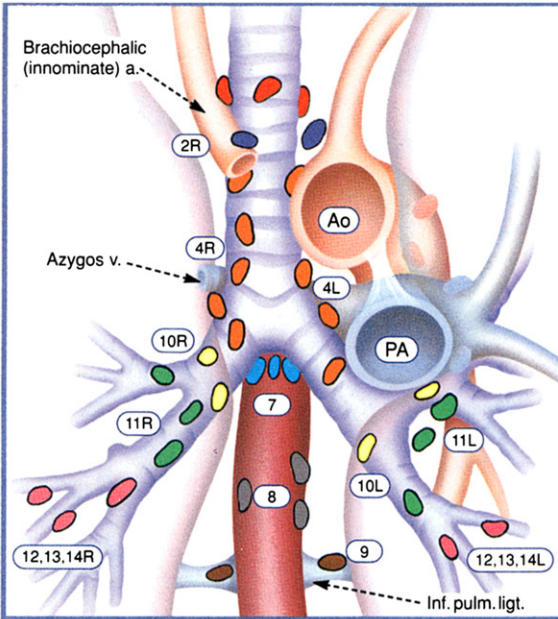
CT, Positron Emission Tomography,
and MRI in Staging Lung Cancer

Jeremy J. Erasmus, MBBCh, Bradley S. Sabloff, MD

*Division of Diagnostic Imaging, University of Texas, MD Anderson Cancer Center,
1515 Holcombe Boulevard, Unit 0371, Houston, TX 77030, USA*

The above article, which appeared in the March 2008 issue (“Contemporary Chest Imaging”), contained a figure that was printed in

black and white, but should have been printed in color. The figure appears in color here (see next page).



Superior Mediastinal Nodes

- 1 Highest Mediastinal
- 2 Upper Paratracheal
- 3 Pre-vascular and Retrotracheal
- 4 Lower Paratracheal (including Azygos Nodes)

N₂ = single digit, ipsilateral

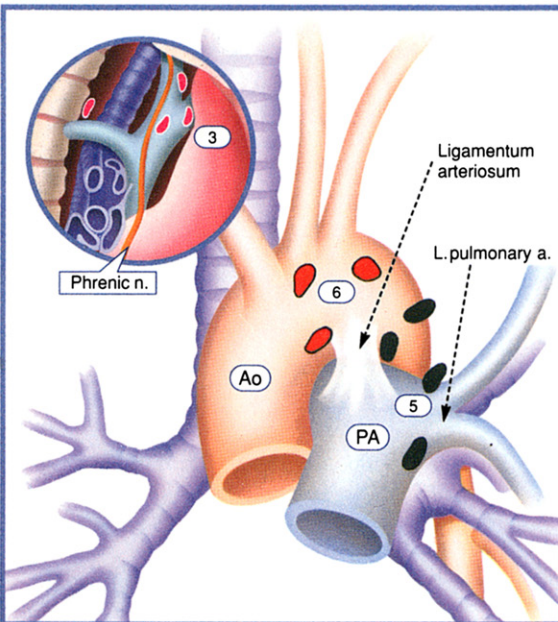
N₃ = single digit, contralateral or supraclavicular

Aortic Nodes

- 5 Subaortic (A-P window)
- 6 Para-aortic (ascending aorta or phrenic)

Inferior Mediastinal Nodes

- 7 Subcarinal
- 8 Paraesophageal (below carina)
- 9 Pulmonary Ligament



N₁ Nodes

- 10 Hilar
- 11 Interlobar
- 12 Lobar
- 13 Segmental
- 14 Subsegmental