

Lim LS, Sherin K, and the ACPM Prevention Practice Committee. Screening for prostate cancer in U.S. men: ACPM position statement on preventive practice. *Am J Prev Med* 2008;34:164–70.

Figures 1 and 2 on page 165 were printed in error. The correct figures are printed below. The authors and publisher regret the errors and any inconvenience they caused the reader.

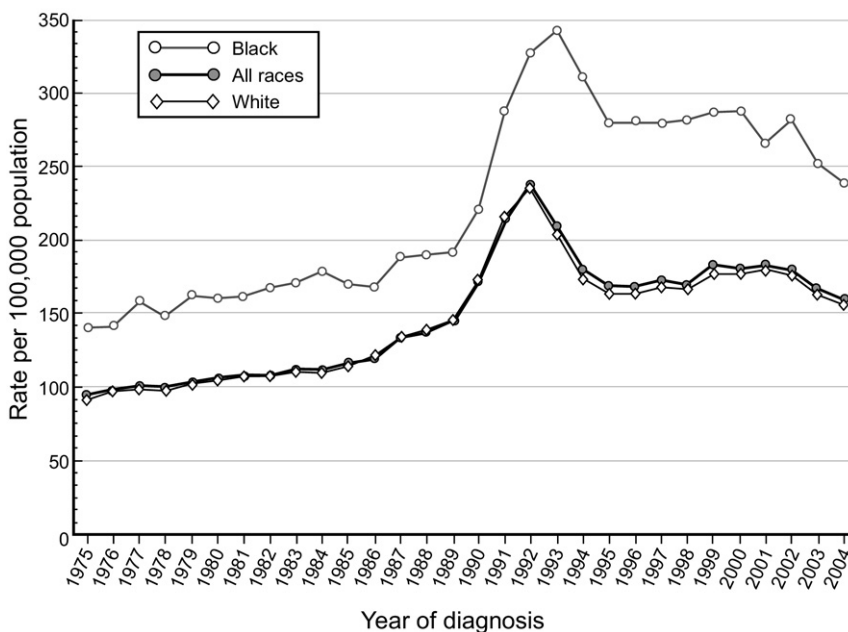


Figure 1. SEER age-adjusted incidence rates by race for prostate cancer, all ages, men. SEER 9 registries for 1975–2004. Age-adjusted to the 2000 U.S. standardized population. SEER, Surveillance Epidemiology and End Results.

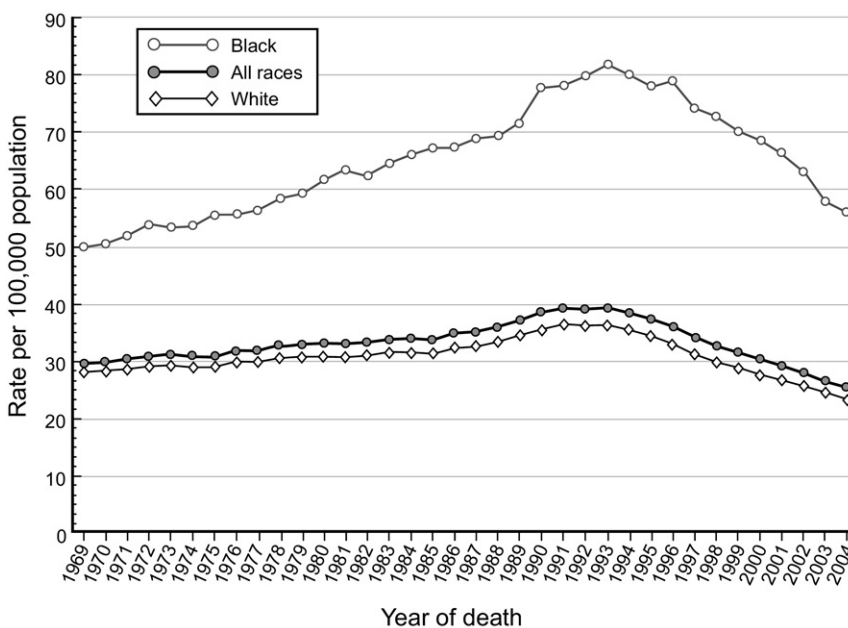


Figure 2. Age-adjusted total U.S. mortality rates for prostate cancer, all ages, men, for 1969–2004 by race. Age-adjusted to the 2000 U.S. standardized population.